

PROJECT SHEET

TRAFFIC MODELLING ... ■

BACKGROUND

Adam Pekol Consulting assists our clients in providing traffic engineering solutions through a range of traffic modelling techniques.

We aim to achieve cost effective, efficient and safe design solutions, through the application of the right traffic engineering model for the individual project.

CAPABILITIES

Adam Pekol Consulting has a wealth of experience in providing development advice and assessing traffic impacts using a wide range of macroscopic, microscopic and intersection simulation modelling packages including:

- EMME/3 – a demand forecasting and network assignment model which specialises in multimodal modelling and analysis of medium-large size networks;
- AIMSUN 6 – a microsimulation model which provides visual outputs to demonstrate the impacts of development and infrastructure design, suitable for the qualitative analysis of small-medium sized networks;
- SIDRA 4.0 – a traffic evaluation tool that models intersection capacity, level of service and performance analysis, suitable for the quantitative assessment of individual intersections; and
- TRANSYT-7F – a traffic signal coordination and optimisation model which optimises cycle length, phasing sequence, splits and offsets.

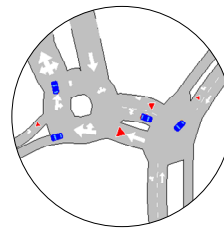
Tools such as these facilitate the analysis of multiple “what if” scenarios, thereby achieving a cost effective and balanced solutions. We currently have multiple professional staff members who are experienced and competent in the operation of these packages. This allows us to provide timely advice and quality modelled outputs.

SIGNATURE PROJECTS



Brisbane Airport Strategic Plan, EMME, Brisbane Airport Corporation (2008)

South Brisbane Riverside Renewal Strategy, EMME, Brisbane City Council (2009)



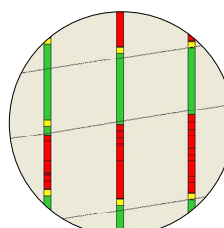
Bruce Parade Retail Development, Glass House Mountains, AIMSUN, M&G Luke (2009)

Bowen Marina, Bowen, SIDRA, Jag Marine Group Pty Ltd (2006)



Emporio, Maroochydore, SIDRA, Reed Property Group (2009)

Aspley Park Central, TRANSYT, Wadley Constructions Pty (2009)



Bridge Street Redesign, Woolloowin, TRANSYT, Sisters of Mercy (2009)